



GLA
UNIVERSITY
MATHURA
Recognised by UGC Under Section 2(f)

Accredited with **A** Grade by **NAAC**

12-B Status from UGC

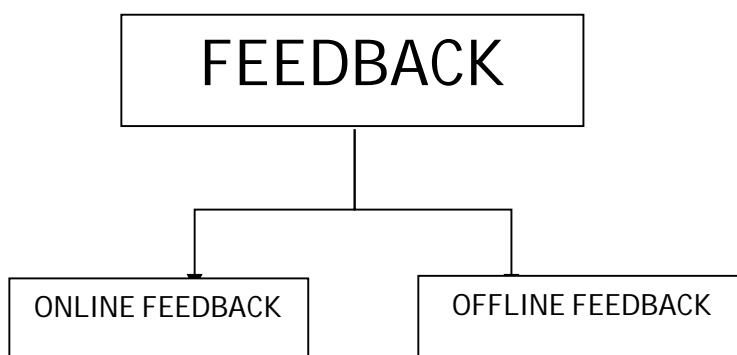
INTERNAL QUALITY ASSURANCE CELL (IQAC)

STUDENT'S SATISFACTION SURVEY

SESSION - 2020-21

STUDENT'S FEEDBACK

Constructive feedback is the backbone of the dynamic system prevailing in the university as it ensures student satisfaction. Suggestions and feedback are valuable and highly appreciated in order to make GLA University a better place. The students are encouraged to put forward their suggestions and rightful opinions that can make GLA University a better place.



Online Feedback

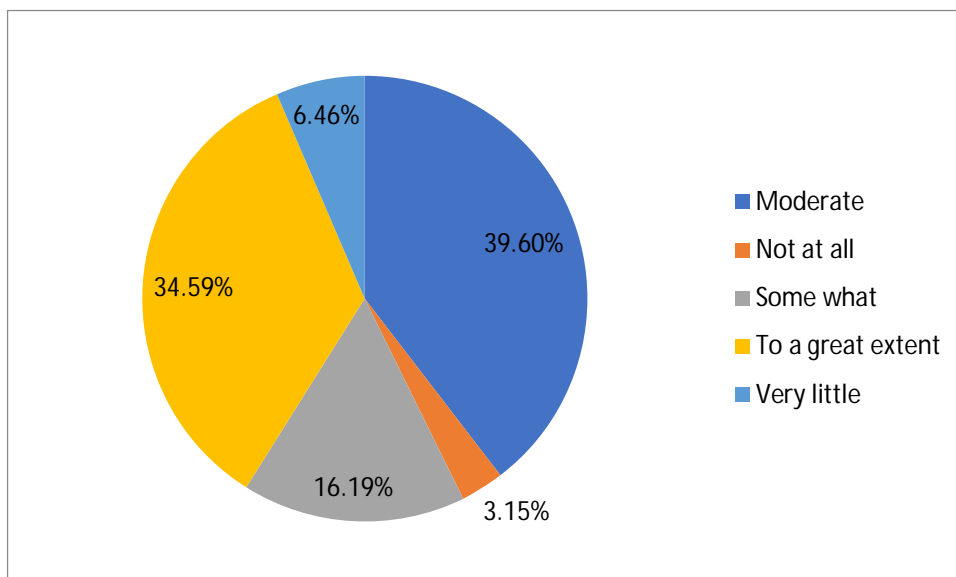
Students provide valuable Feedback every semester. online through a Scientific Software-**Feedback Management Information System (FMIS)**. Feedback from students is also welcomed through the University Website and/or GLAMS. The views of the students are immediately forwarded to the relevant department for effective action.

Offline Feedback

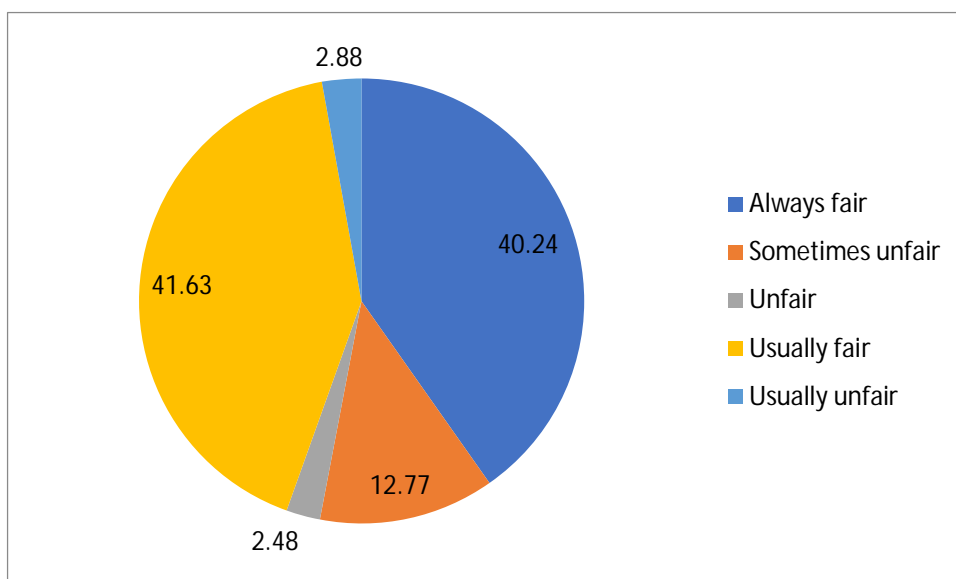
Students can give a written request regarding their concern to the appropriate authority

- Class Counselor
- Department of Student Welfare
- HODs
- Through Suggestion Boxes

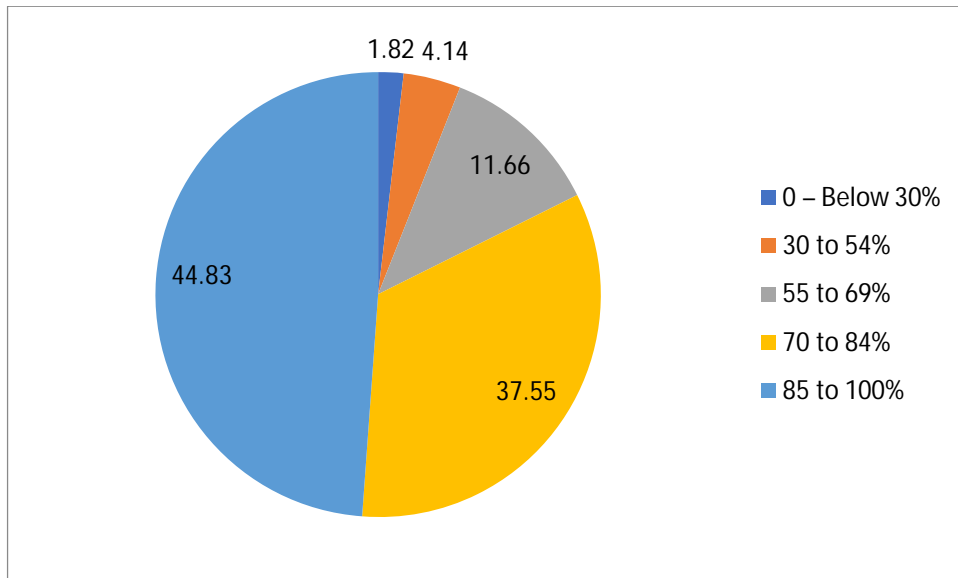
Q1. Efforts are made by the institute/ teachers to inculcate soft skills, life skills and employability skills to make you ready for the world of work.



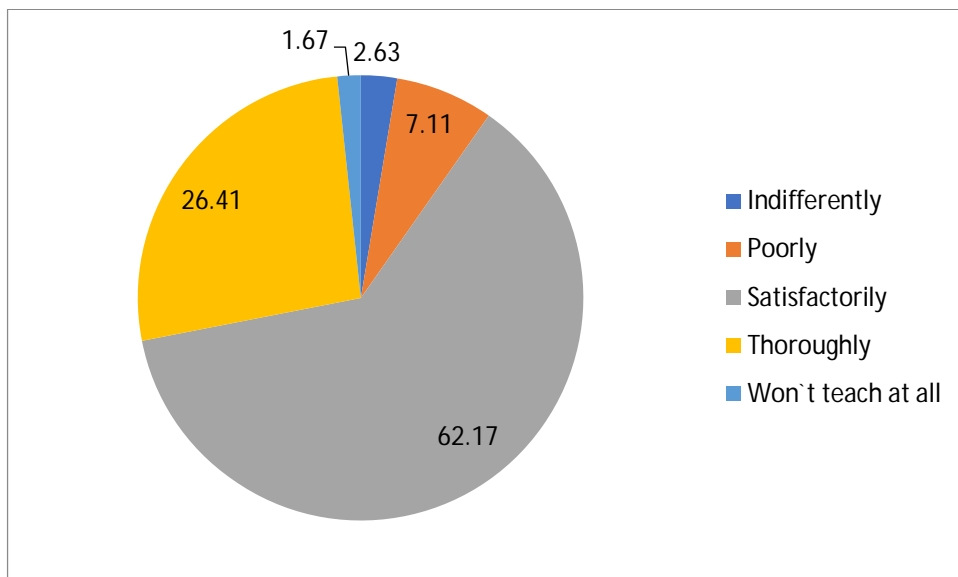
Q2. Fairness of the internal evaluation process by the teachers.



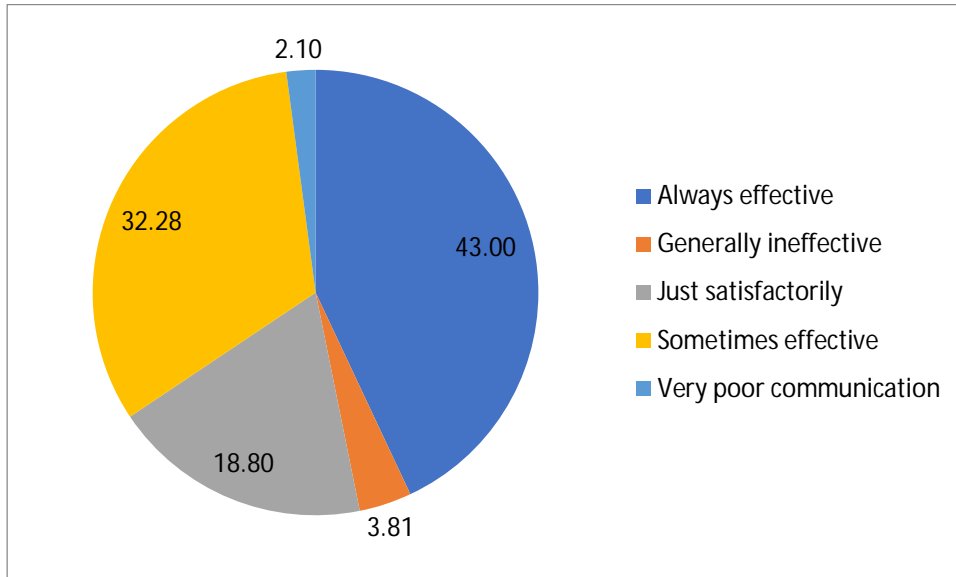
Q3. How much of the syllabus was covered in the class?



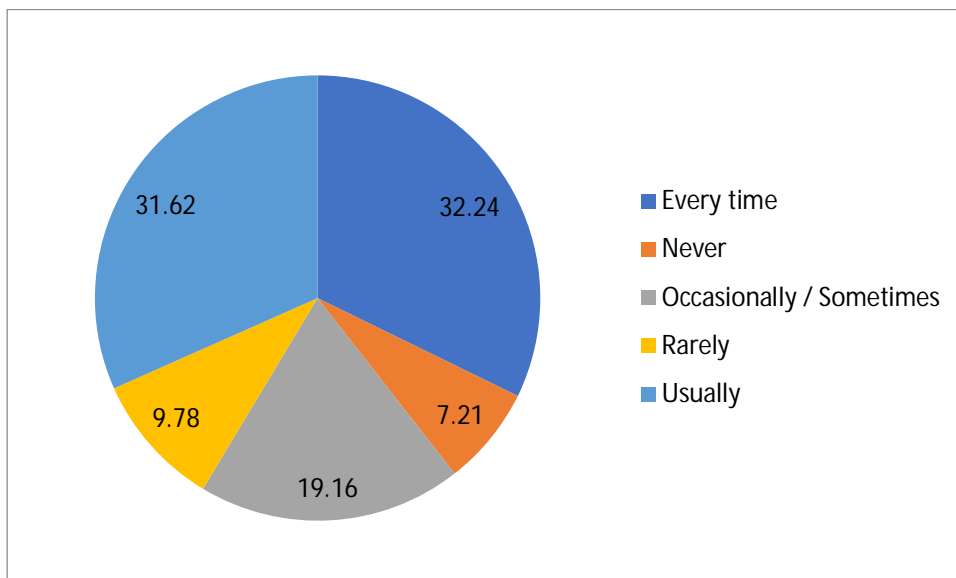
Q4. How well did the teachers prepare for the classes?



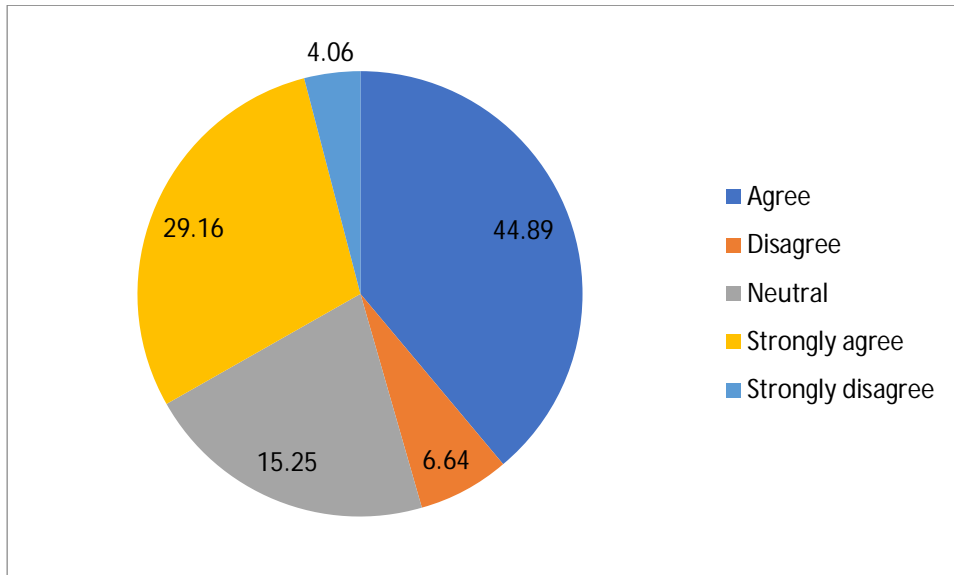
Q5. How well were the teachers able to communicate?



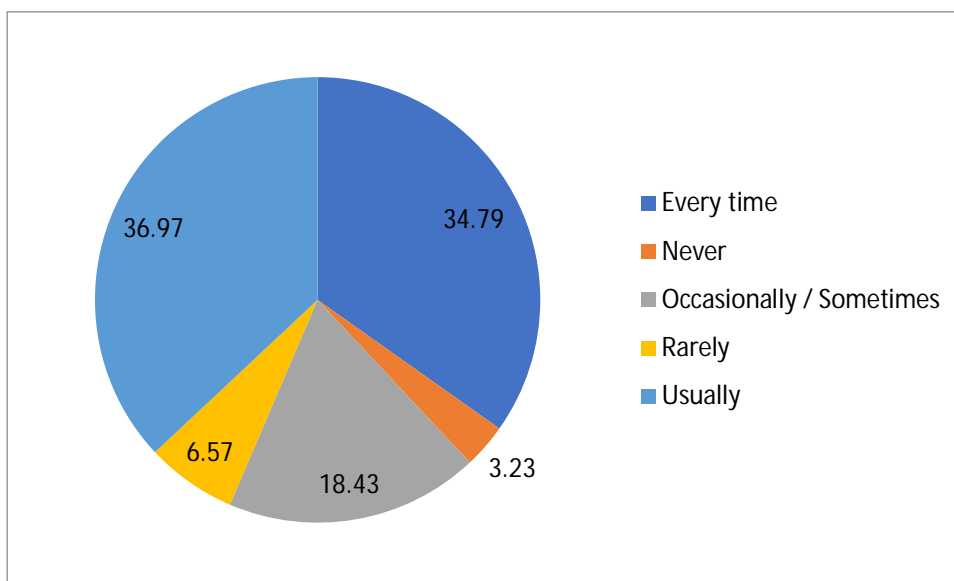
Q6. Teachers are able to identify your weaknesses and help you to overcome them.



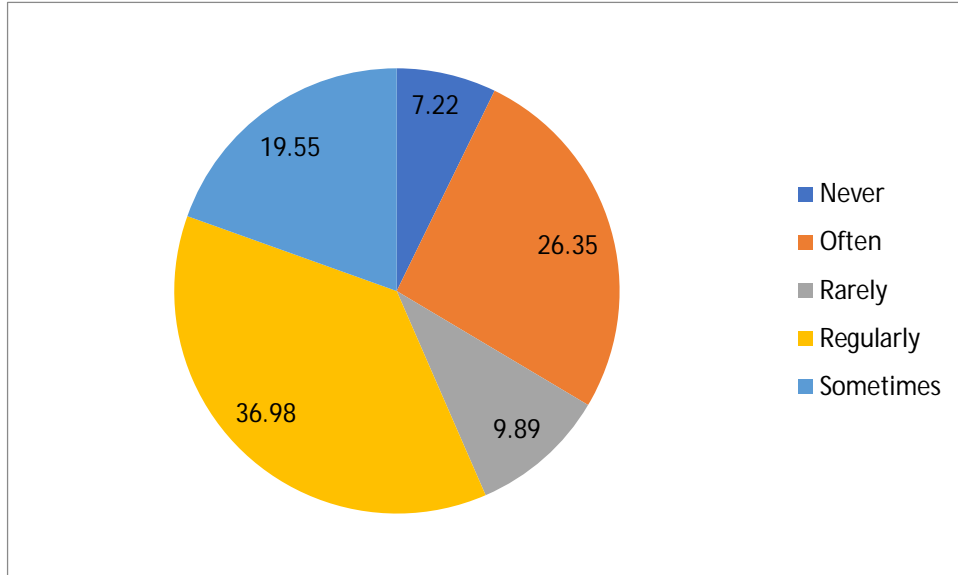
Q7. Teachers encourage you to participate in extracurricular activities.



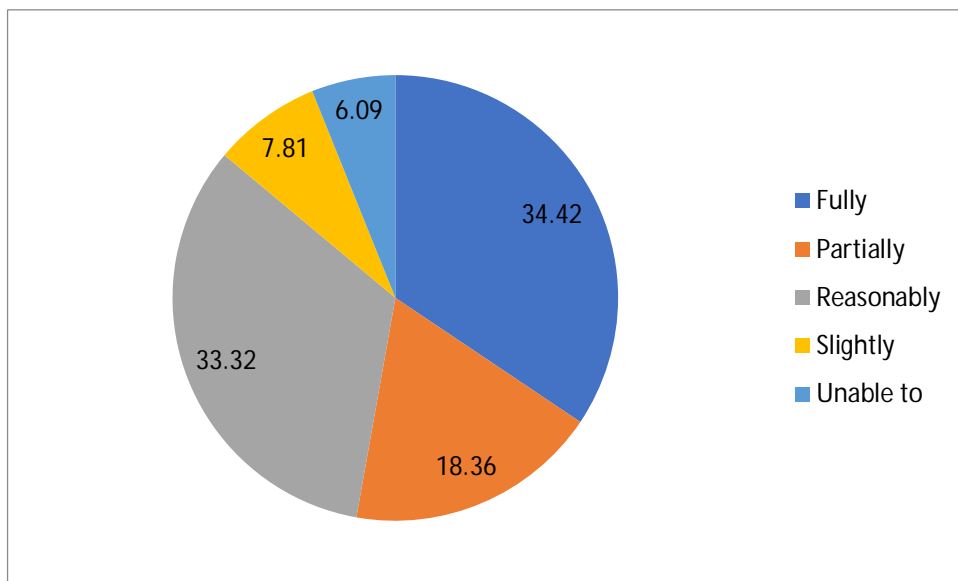
Q8. Teachers inform you about your expected competencies, course outcomes and program Outcomes.



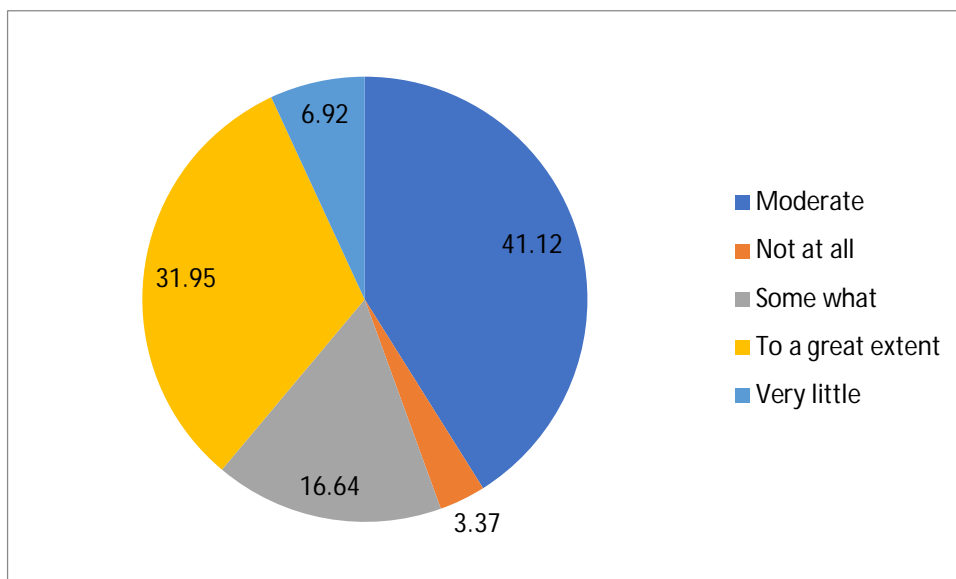
Q9. The institute takes active interest in promoting internship, student exchange, field visit opportunities for students.



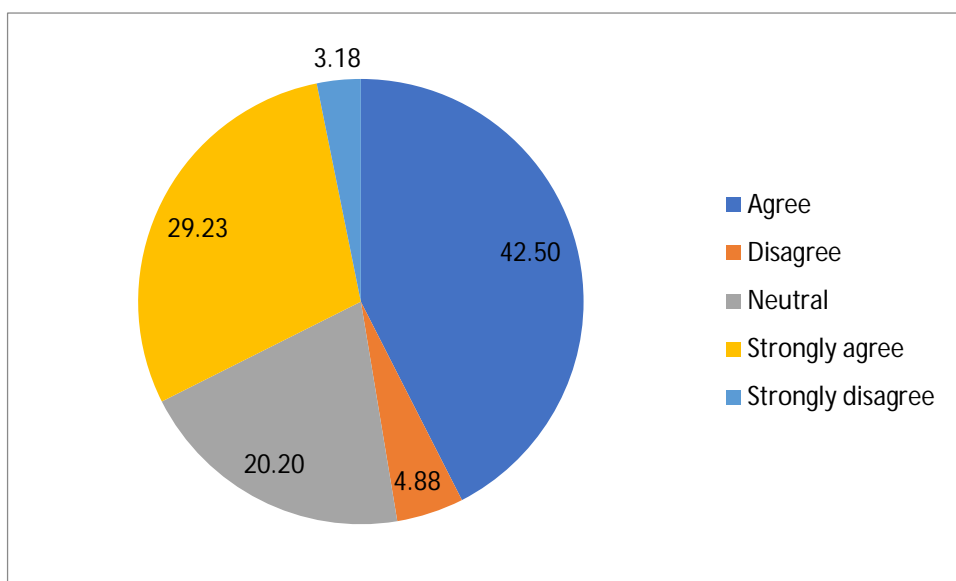
Q10. The teachers identify your strengths and encourage you with providing right level of challenges.



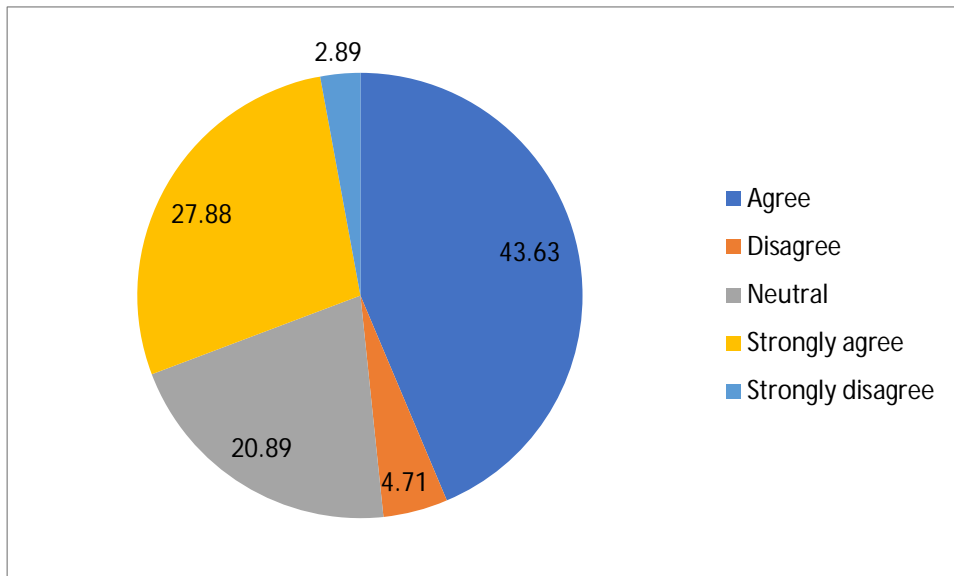
Q11. The institute/ teachers use student centric methods, such as experiential learning, participative learning and problem solving methodologies for enhancing learning experiences.



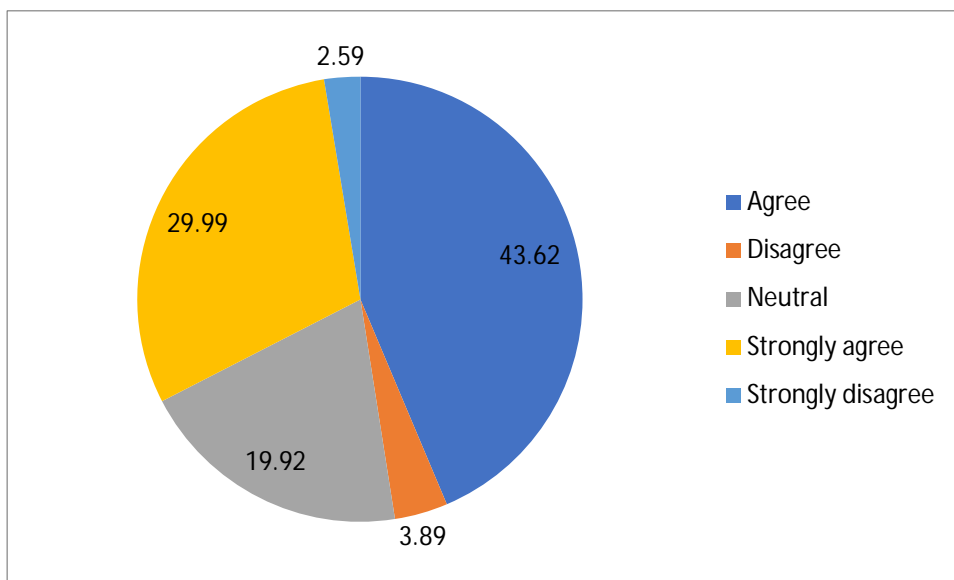
Q12. The institution makes effort to engage students in the monitoring, review and continuous quality improvement of the teaching learning process.



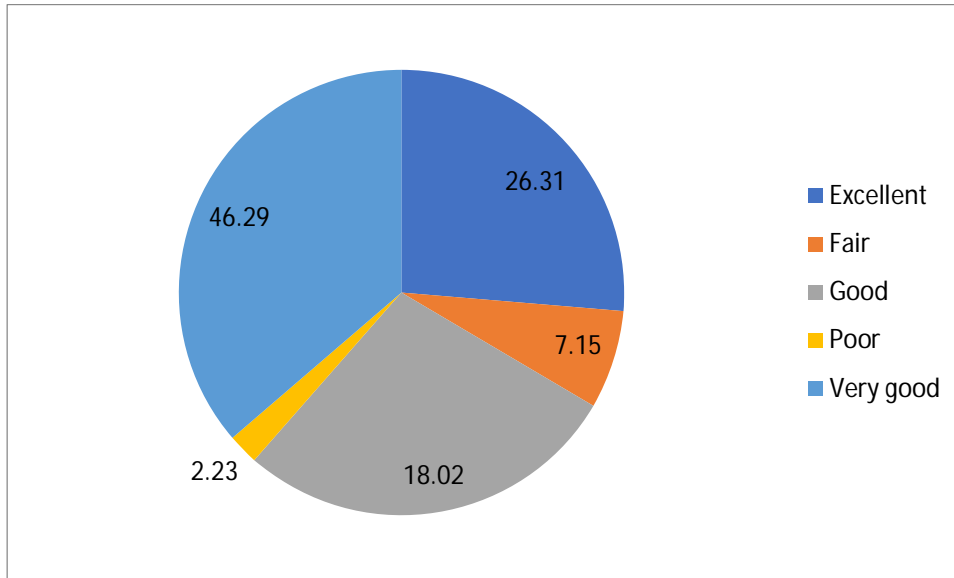
Q13. The institution provides multiple opportunities to learn and grow.



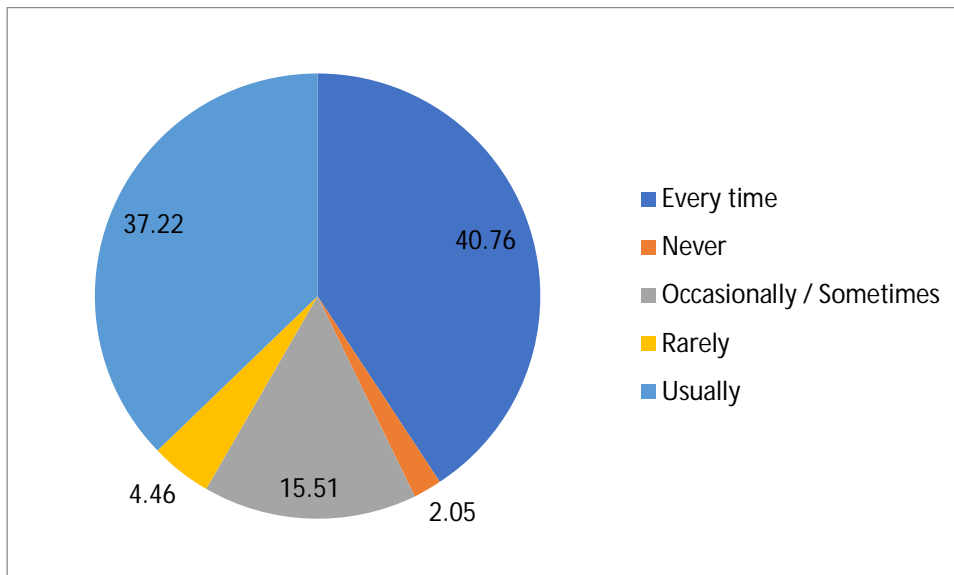
Q14. The overall quality of teaching-learning process in your institute is very good.



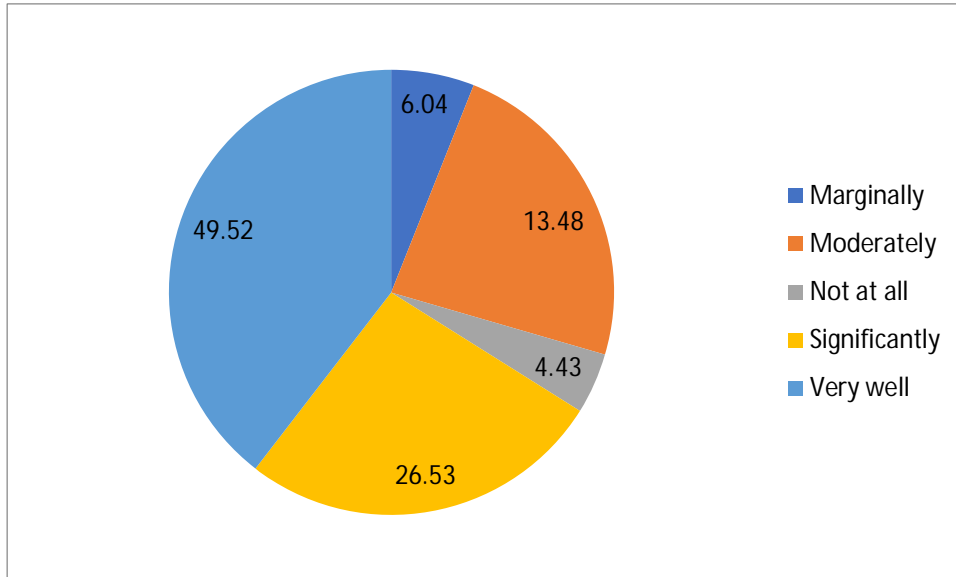
Q15. The teacher's approach to teaching can best be described as :



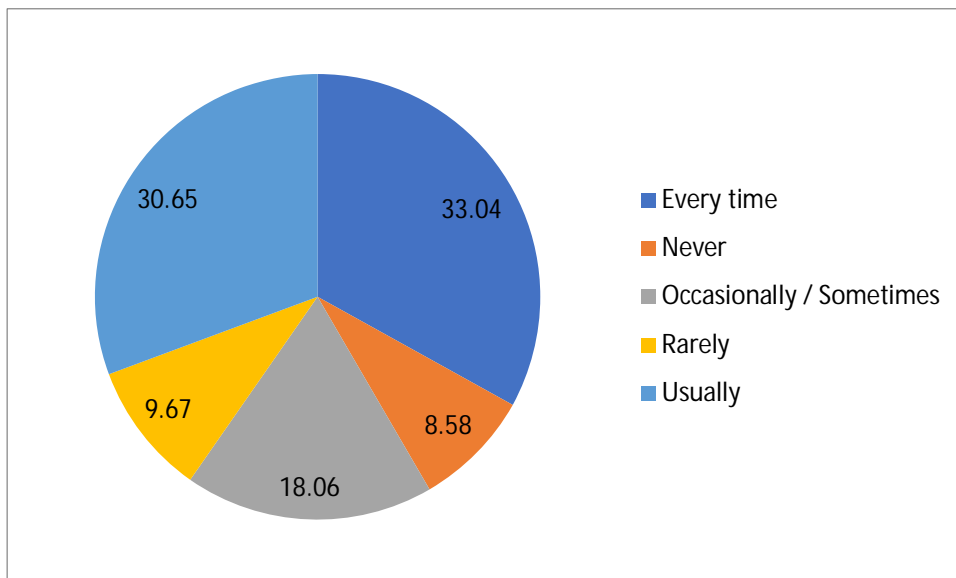
Q16. The teachers illustrate the concepts through examples and applications.



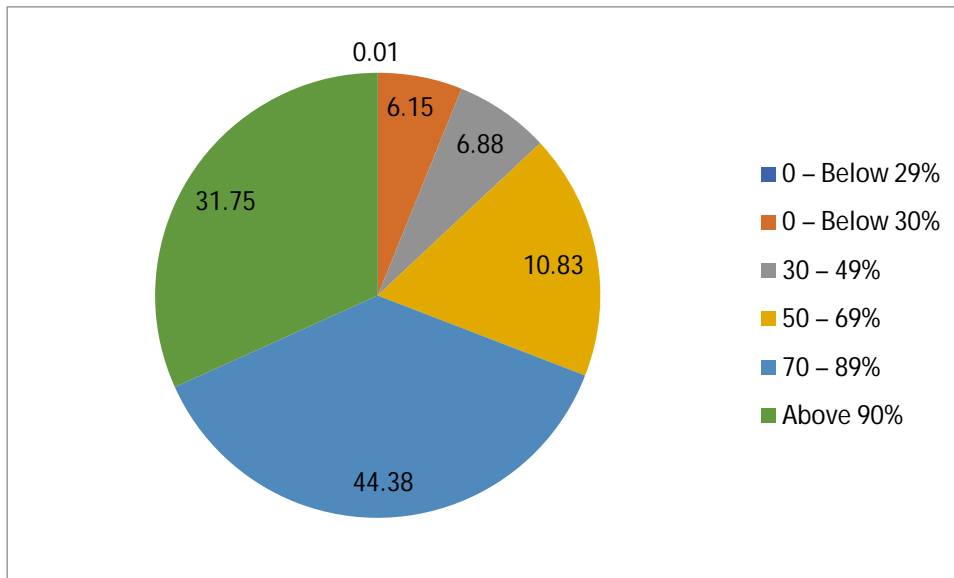
Q17. The teaching and mentoring process in your institution facilitates you in cognitive, social and emotional growth.



Q18. Was your performance in assignments discussed with you?



Q19. What percentage of teachers use ICT tools such as LCD projector, Multimedia, etc. while teaching?



Q20. Your mentor does a necessary follow-up with an assigned task to you.

